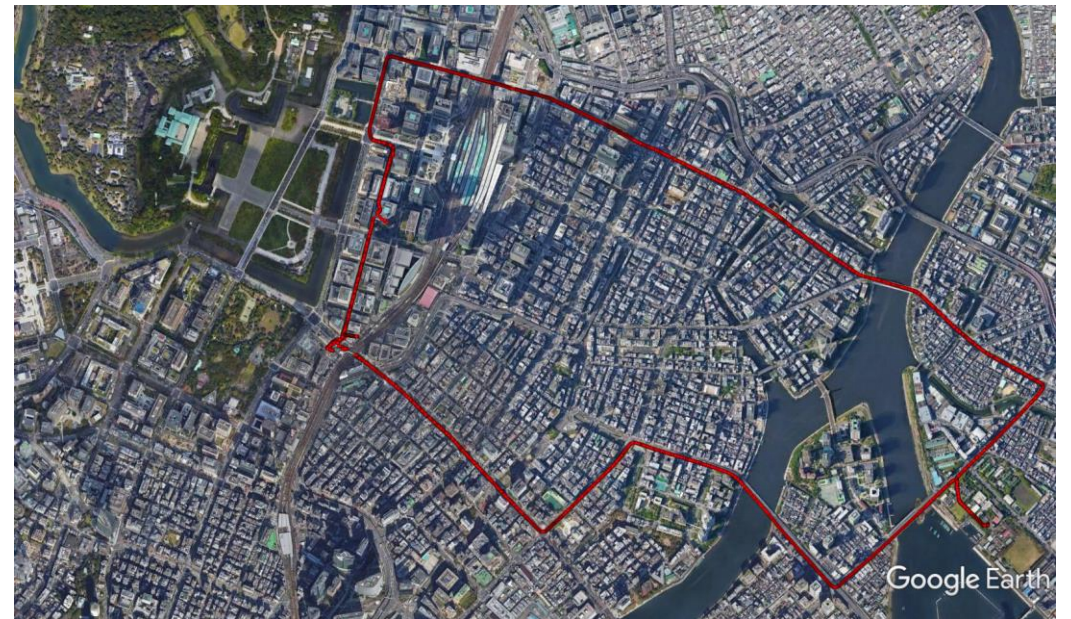
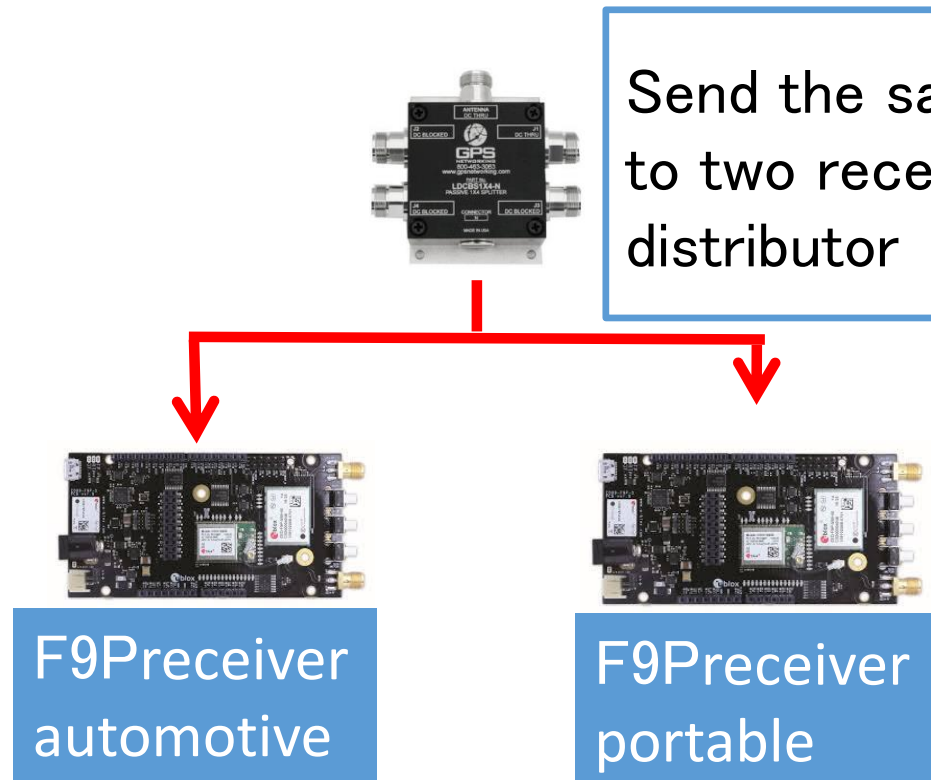


Comparison Experiment between automotive and portable of u-blox

11/11/2019

Outline

In order to compare the u-center automotive and portable positioning modes, this experiment was conducted in urban areas using two f9P receivers.

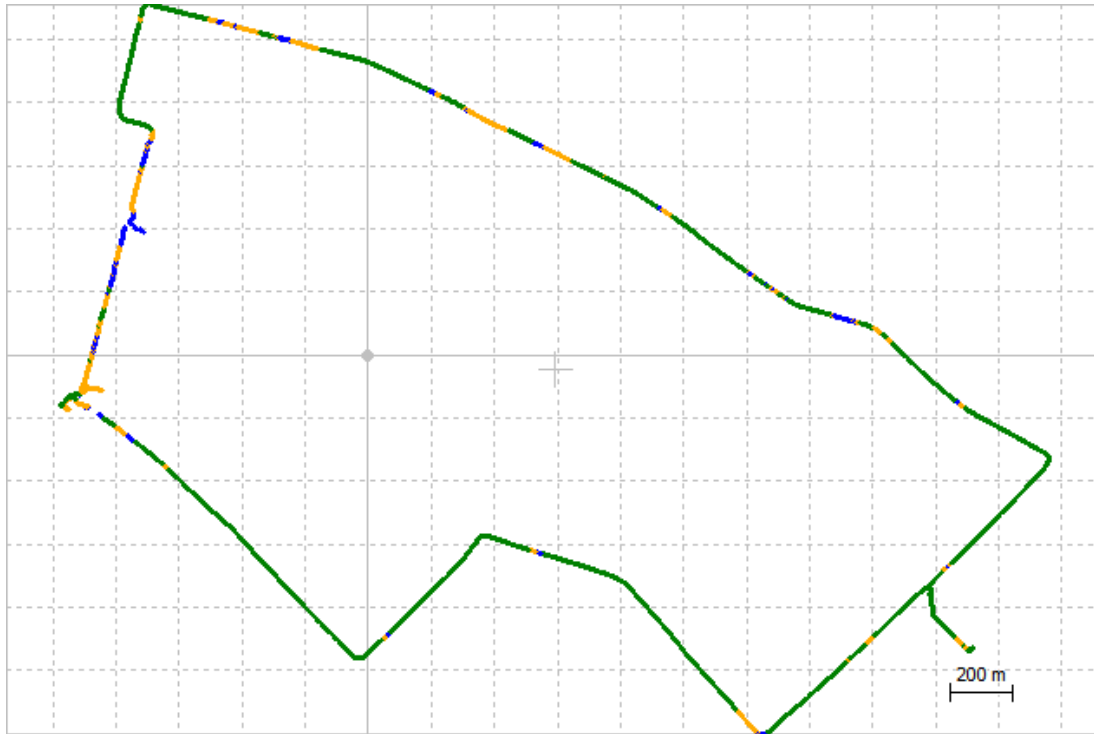


(Driving course in urban areas)

Driving course (43 minutes)

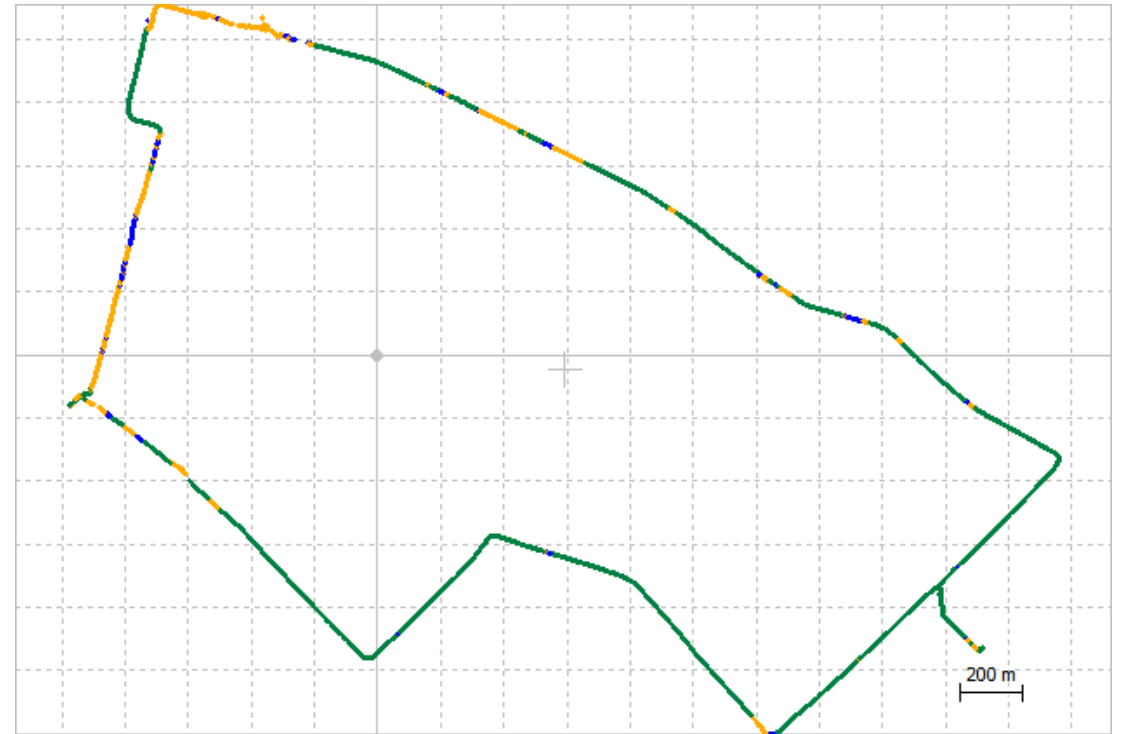
automotive

FIX Rate : 58.9%



portable

FIX Rate : 55.7%



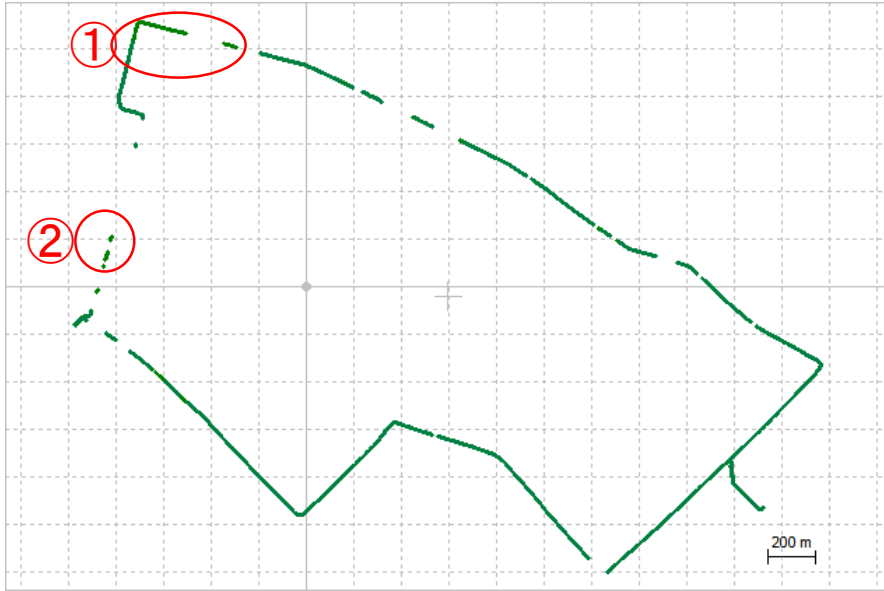
Comparison of FIX part



(m)	AVE	STD	RMS
Latitude	0.001	0.019	0.019
Longitude	0.001	0.011	0.012
Altitude	0.001	0.033	0.033

In the FIX part, the horizontal difference between the two modes is almost within 10cm, and within 20cm in altitude.

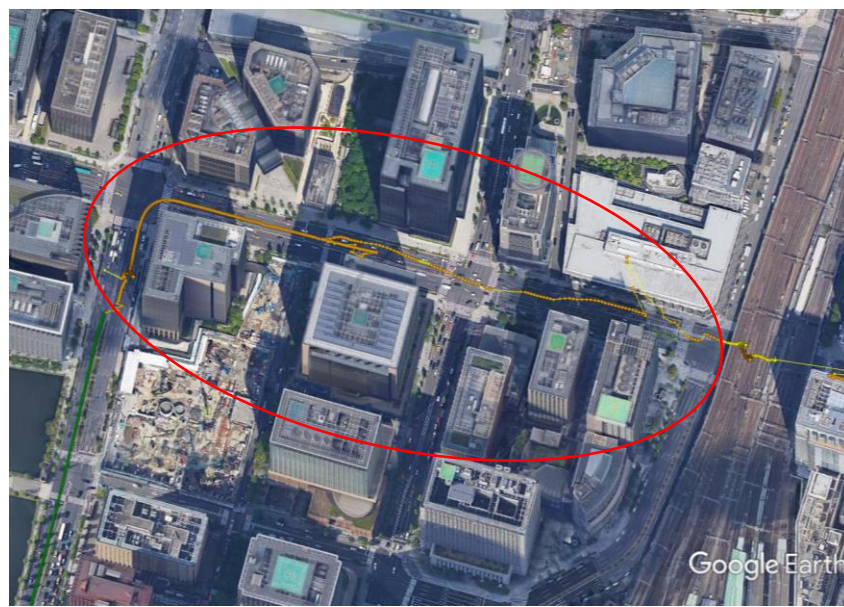
automotive



portable

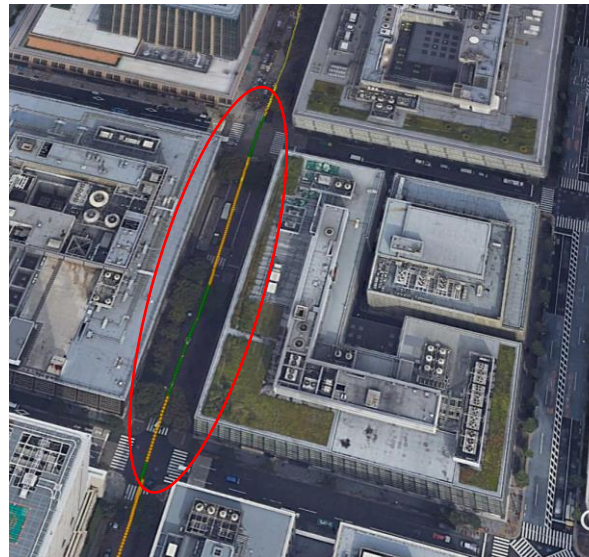


①



Portable mode did not demodulate for a long time after underpass

②



Automotive mode can become FIX immediately in opensky area

Summary

- There is no significant difference in positioning accuracy between the two modes.
- About demodulation performance, automotive mode was better than protable mode in this experiment.